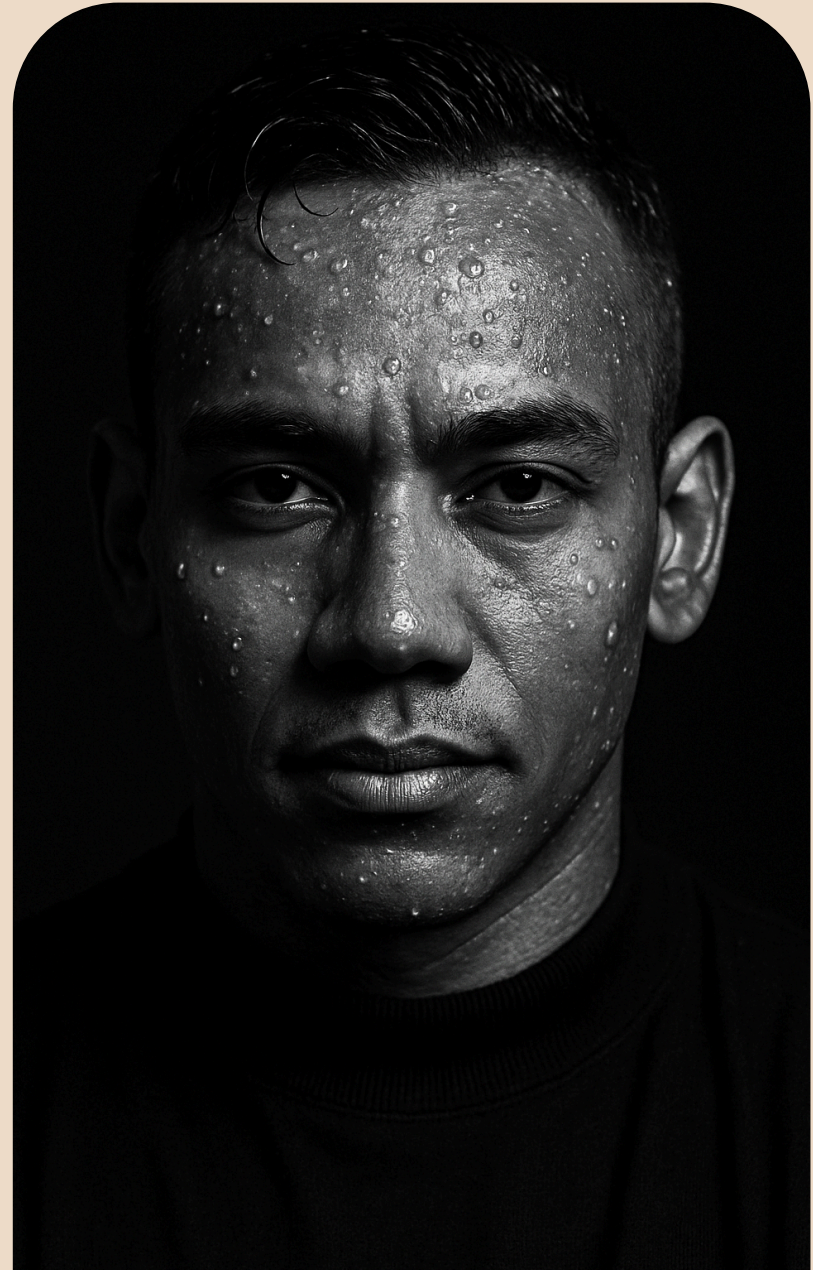


Prompt:

Create a high contrast close portrait of my face focusing on front head, in black and white closeup, 35mm lens, 4k hd quality, giving proud expression, water droplets on my face, black shadow background only face is visible with my profile looking sharper, adding wet hair, ratio 4:3



BEFORE



AFTER

Prompt:

Transform the portrait image of myself into a cinematic, surreal close-up ¾ portrait while fully preserving my natural facial features, proportions, and skin tone. In the image, I am styled with softly tousled hair and subtle, atmospheric lighting. A warm, golden-orange beam of light should cut across one eye and upper cheekbone, highlighting the eye with soft gleam and creating dramatic contrast. Light particles and faint sparkles float within the beam, adding an ethereal feel. The rest of the face fades into moody teal shadows, with soft rim lighting catching strands of hair for depth and glow. Skin should appear natural and matte, softly sculpted by light. The background fades into a deep teal-to-black gradient, keeping the focus on the illuminated eye and facial structure. The final result should have high detail, surreal cinematic lighting, and a dreamy, introspective mood, conveying hope, mystery, and inner calm. Output in 9:16 ratio.



BEFORE



AFTER

Prompt:

Transform this original drawing created by [e.g., my kid / me] into a photorealistic 3D render. The subject is intentionally undefined, it could be an animal, creature, object, or something entirely imagined. Do not guess or reinterpret; stay fully faithful to the original shape, proportions, and imperfections, including uneven lines or asymmetry. Avoid refining or smoothing any part of the design. Make it look like this figure exists in the real world, using realistic materials (like skin, fur, fabric, plastic, or metal) with natural lighting and shadows. A fitting background can be added, but it must reflect the mood of the drawing without altering the form. The result should resemble a high-resolution CGI photo, true to the original, brought to life as-is.



Chipa Inu

BEFORE



Chipa Inu

AFTER

Prompt:

Create a high-resolution 3D-rendered canvas (10:16 aspect ratio) using the image of me I have uploaded.

Design nine kawaii chibi-style character stickers based on my likeness, each with different outfits, poses, and facial expressions. Preserve my facial features and recognizable traits in each chibi version while exploring a variety of looks, casual, sporty, cozy, playful, dreamy, etc.

Each character should have a clean white border and a small speech bubble with commonly used phrases like "OK!", "LOL!", "Let's go!", "BRB!", etc. Add soft 3D shading to make them look like real, pop-out stickers.

Set all nine characters against a cheerful white-to-pastel blue gradient background that enhances a fun, lighthearted, and positive mood. The final result should be vibrant, polished, and perfect for WhatsApp sticker packs or social media usage, with clear visibility, consistent styling, and a cute, expressive vibe.



BEFORE



AFTER

Prompt:

Create a high-resolution embroidered patch of the uploaded logo with realistic raised stitching for a detailed 3D effect. Ensure all colors and proportions match the original logo precisely. Present the patch on a transparent PNG background, with no fabric or surface beneath it, as if it were ready for application to apparel or accessories. The final image should reflect the quality and finish of a professionally manufactured logo patch.



BEFORE



AFTER

Prompt:

Create a high-quality, hyper-realistic image of the uploaded product, presented on a natural surface such as moss-covered wood or textured stone. The product should be rendered with crisp detail, showcasing materials, stitching, logos, and surface textures, while maintaining a clean, minimalistic aesthetic. Use soft, diffused lighting to accentuate the product's key features. The background should be gently blurred to create cinematic depth of field, with an organic, nature-inspired setting that evokes a calm, serene atmosphere, like a forest or natural outdoor scene. The focus should remain entirely on the product.



BEFORE



AFTER